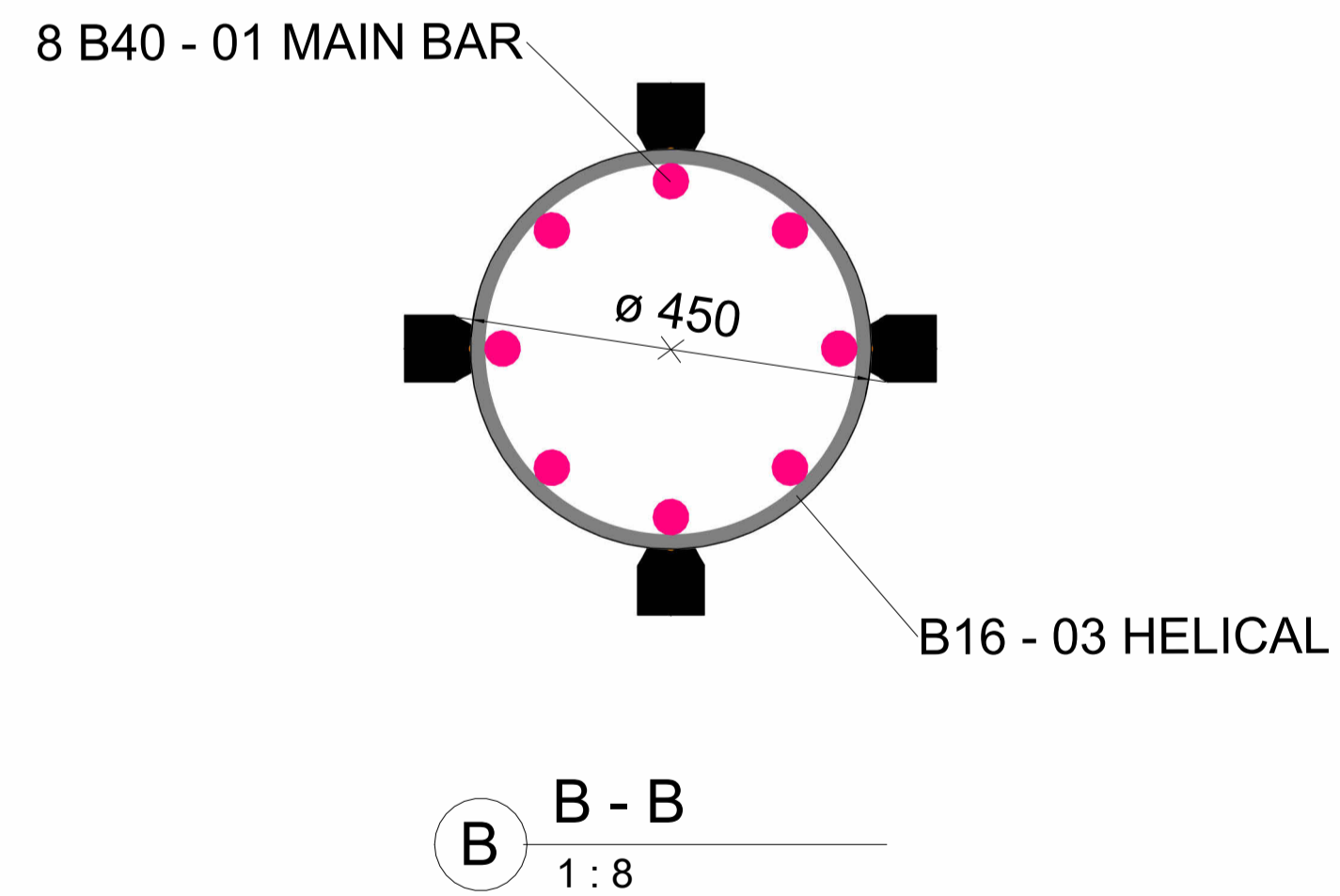
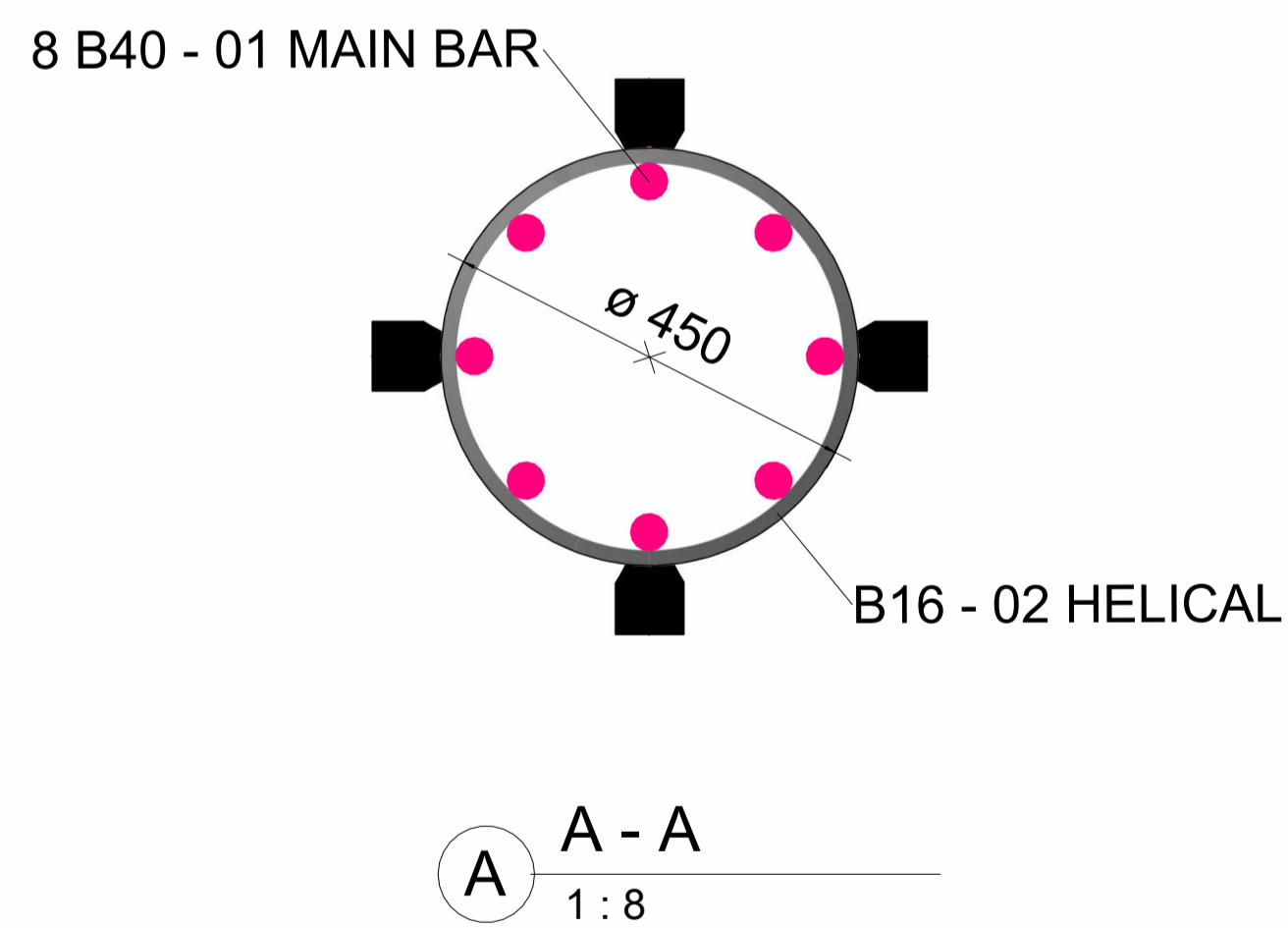
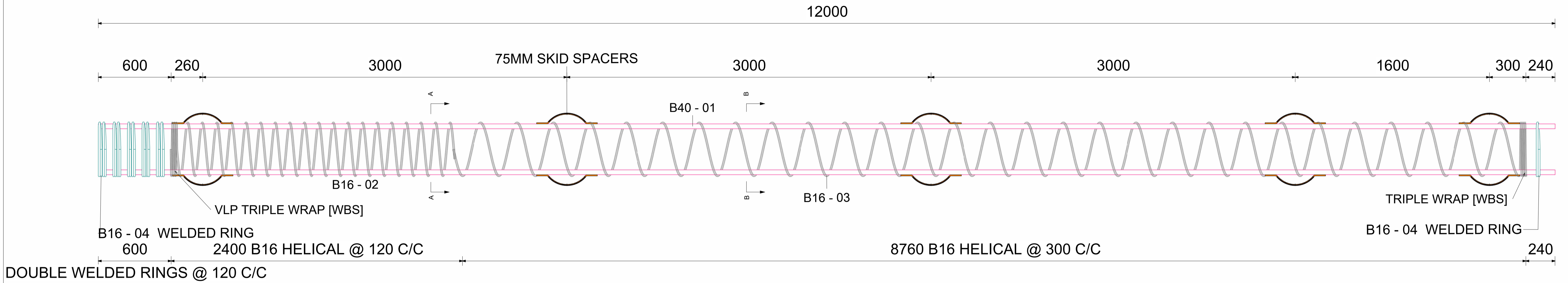


Quantity	Rebar Member	Weight (Kg)
1	TEST PILE	1097
		1097

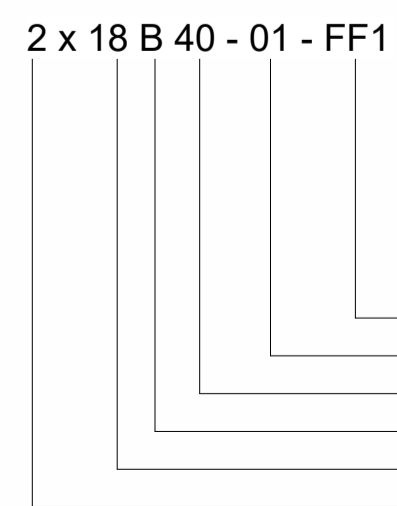


**Notes:**

- All reinforcement shall be bent in accordance with BS8666:2020, unless otherwise shown on the drawings
- Cage fabrication with B-500B/C grade steel
- Do not scale from this drawing
- Cages are pre-slung for horizontal lifting unless requested otherwise
- To be read in conjunction with all engineers drawings
- Foam to be length of projection less 100mm unless stated otherwise
- Lifting points to be sprayed red for identification purposes
- Lifting points welded as FBR standard procedure
- Tolerance: Triple wrap/helical +/- 10mm, internal rings OD +/- 10mm, cage diameter +/-10mm, main bar +/- 25mm, Stock Lengths +100/-0mm, Spacer dist +/-500mm, internal rings dist +/-500mm
- Weld details : Min throat thickness for cruciform/lap joint ≥ 0.3d/min
- for load bearing cruciform and lap joints weld length ≥ 0.5d/min and 4d/min respectively
- 30 percent of Links/helical to be tack welded
- Safe working load can be issued on request

**KEY:** TP= Trapping Point

- SB = Splice Band
- LB = Lifting Band
- VLP= Vertical Lifting Point
- HLP= Horizontal Lifting Point
- WT = Wire Tied



**F.BRAZIL**  
REINFORCEMENTS LTD

Romanville way Charfleets Ind Est  
Canvey Island Essex  
SS80RB

t : +44(0) 012 685 1061  
e : Design@fbrazilreinforcements.co.uk  
w : www.fbrazilreinforcements.co.uk

Client KELTBRAY			
Project PROJECT OLYMPUS			
Title TEST PILE			
Drawn by JJ	Checked by E.B	Approved by WH	Date 22/10/24
Scale As indicated	Size A1	Suitability S5   FOR CONSTRUCTION	
Client Drawing No N/A			
Drawing No FBR-KLT-PJ-TP-DR-0001			Rev C01

Rev	Description	Issued by	Issued to	Date
C01	Approved For Construction	JJ	DT	22/10/24
P03	Revision	JJ	GS	22/10/24
P02	Revision	JJ	GS	22/10/24
P01	Issued For Comments	JJ	MC	22/10/24